

# RediSep® Reversed-Phase C18, C18Aq, and C8 Columns

## Use, Cleaning, and Storage Instructions

Chromatography Application Note  
P/N 60-2203-053 Revision H, AN02

### Application Overview

Proper preconditioning, cleaning, and storage of reusable Teledyne ISCO RediSep Silver reversed-phase C18 and RediSep Gold® high performance C18, C18Aq, and C8 columns will help to extend column life and improve column consistency and reliability.

### General Method

#### Initial Preconditioning

Flush the column with six column volumes (CV) of 1:1 water:acetonitrile prior to immediate use. Alternatively, pump 2 CV of 100% acetonitrile through the column, then cap and store it for one hour before use. Refer to Table 1 for column volume data.

Table 1: Column Data

Column Media Weight	Column Volume (mL)	Optimal Flow Rate (mL/min)
<b>RediSep C18 Columns</b>		
4.3	4.1	18
13	12.9	30
26	26.4	35
43	42.4	40
86	87.7	60
130	132.6	85
240	242.8	150
360	361.1	150
<b>RediSep Gold High Performance C18 Columns</b>		
5.5	4.6	18
15.5	13.5	30
30	26.4	35
50	42.6	40
100	87.7	60
150	129.7	85
275	243.4	150
415	363.5	150
950	825	250
1900	1650	300
8600	7500	850

### Sample Loading Capacity

The sample load on the column should be 0.1 to 2 percent of the column media weight.

### Teledyne ISCO

P.O. Box 82531, Lincoln, Nebraska, 68501 USA  
Toll-free: (800) 228-4373 • Phone: (402) 464-0231 • Fax: (402) 465-3022  
Email: [Isco.Service@teledyne.com](mailto:Isco.Service@teledyne.com)

Teledyne ISCO is continually improving its products and reserves the right to change product specifications, replacement parts, schematics, and instructions without notice.

Use and Disclosure of Data: Information contained herein is classified as EAR99 under the U.S. Export Administration Regulations. Export, reexport or diversion contrary to U.S. law is prohibited.

### Post-run Care

With proper care, RediSep C18 columns may be used thirty times or more. Reversed-phase methods should be written so that at the end of the separation, the column is washed with 2–4 CV of a high percentage (100%) of the organic (B) solvent. After 2–4 CV of wash, the percent organic can be returned to the starting condition for 2–3 CV to anticipate the next run column equilibration conditions (see Figure 1). Alternatively, the percent organic can be changed to 80% in anticipation of column storage.

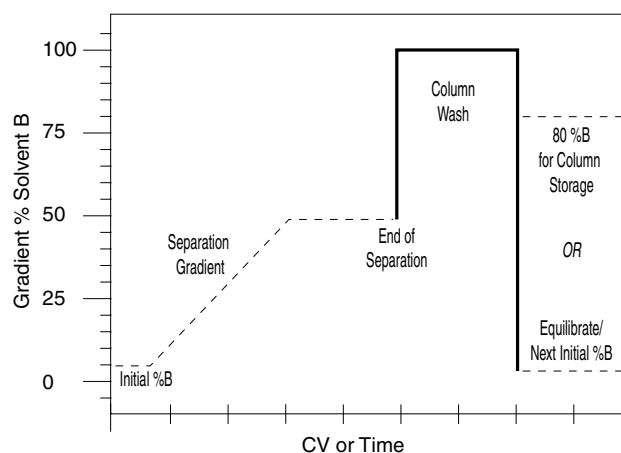


Figure 1. Post-run column flushing.

### Storage

It is possible to store C18 columns for long periods with no loss in performance. Following are some general rules for storage of reversed-phase C18 columns:

- *Once wetted, never dry out a reversed-phase column.* This will induce channeling due to expansion and contraction of the stationary phase. The air purge feature (if available on the Flash chromatography system) should be turned off.
- *Store columns wet and well-capped* in 10–30% water and 70–90% organic solvent such as acetonitrile, methanol, or ethanol.

### Summary

Precondition columns before initial use. Clean columns with high (100%) organic solvent. Never dry the column and store wet and capped with 70–90% organic solvent.

