

FoxyR1/R2 Firmware

Update Instructions

Updating the Foxy R Firmware

There are two methods for updating the firmware: via a local computer, or via network connection.

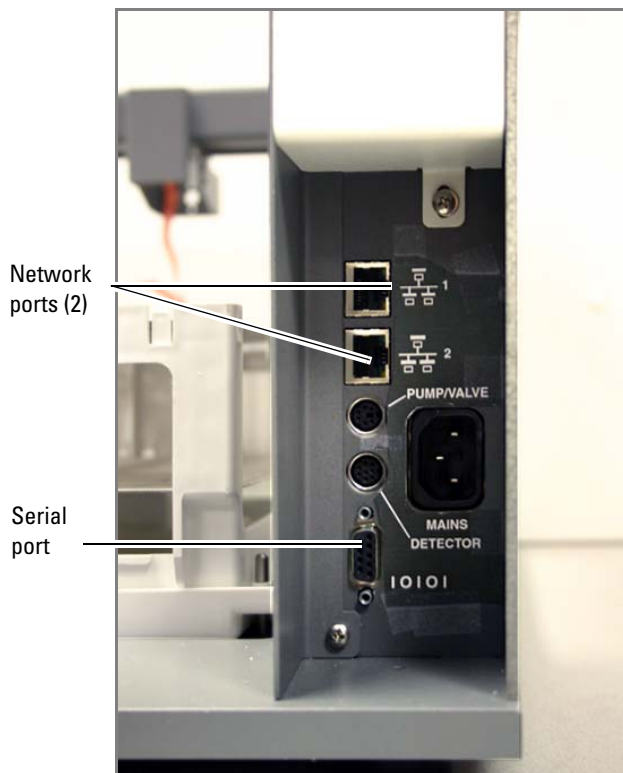


Figure 1: Connectors for local and network updates

Local Computer

To update the Foxy R's firmware locally, you need an external PC with HyperTerminal (or similar terminal communications program).

1. Touch the Standby/On icon to place the unit in standby.
2. Connect the PC to the Foxy R's serial port with a serial connect cable (other connections to the unit may remain unchanged).
3. Open HyperTerminal by clicking Start > Programs > Accessories > Communications > HyperTerminal.
4. When the program opens, type the name FC and click OK.



Figure 2: Connecting with HyperTerminal

5. Select the COM port from "Connect using:..." Click OK.



Figure 3: PC COM port selection

6. Select the following port settings:
 - a. Bits per second: 19200
 - b. Data bits: 8
 - c. Parity: None
 - d. Stop bits: 1
 - e. Flow control: Noneand press OK.

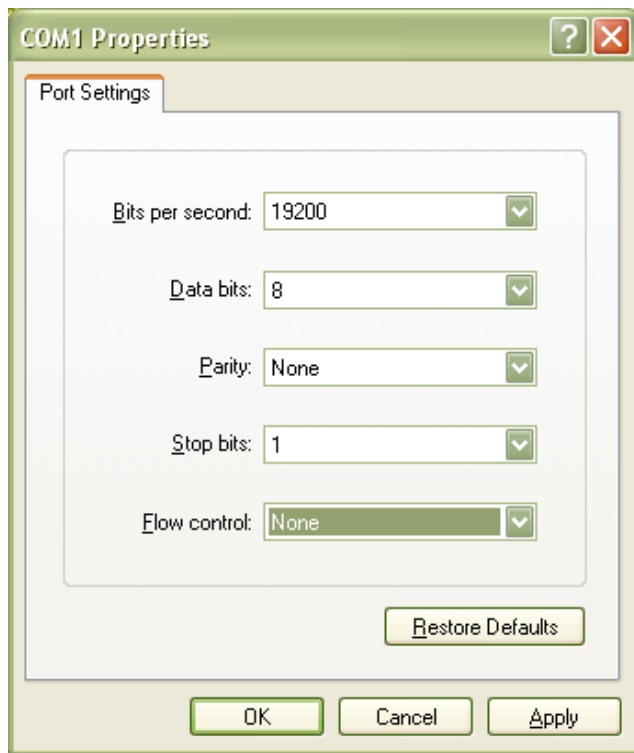


Figure 4: Serial communication settings

7. This begins your FT HyperTerminal session. Restart the Foxy R by unplugging the power and plugging it back in. Immediately press Ctrl+c on the computer.
8. Type "xdd" and press Enter.
9. From the Transfer drop down menu, select Send File.
10. Browse to the test.elf.ezip file and select it.
11. For Protocol, select Xmodem and press Send. This will begin the update.
12. When the update has completed, disconnect the Foxy R from the PC.

Network Connection

To update the Foxy R firmware via network connection, first connect a network cable from your computer to either of the network ports on the rear panel of the Foxy R (refer to Figure 1). Then:

1. Place the test.elf.ezip on the C: drive root directory. (It can be located elsewhere, but you will need to browse to it from within the CMD window.)
2. Open a command prompt from a computer on the same network as the Foxy R unit. To perform this in WindowsXP, select Start > Run, type "CMD" in the OPEN box, and then Return.
3. If the test.elf.ezip file is not at the root folder level, you will need to browse to its folder.
4. At the command prompt, type: TFTP -I 192.168.1.202 PUT TEST.ELF.EZIP, and press Enter.

Note

If the Foxy IP address is different, replace 192.168.1.202 with the correct IP address.

The command prompt window should display a message that the transfer was successful.

5. Unplug the power cord from the Foxy R unit. After a few seconds, connect the power cord again. The Foxy R unit should now be updated and ready for use.

Last modified January 12, 2011

Teledyne Isco, Inc.

P.O. Box 82531, Lincoln, Nebraska, 68501 USA
 Toll-free: (800) 775-2965 • Phone: (402) 464-0231 • Fax: (402) 465-3001
 E-mail: IscoService@teledyne.com

Teledyne Isco is continually improving its products and reserves the right to change product specifications, replacement parts, schematics, and instructions without notice.

