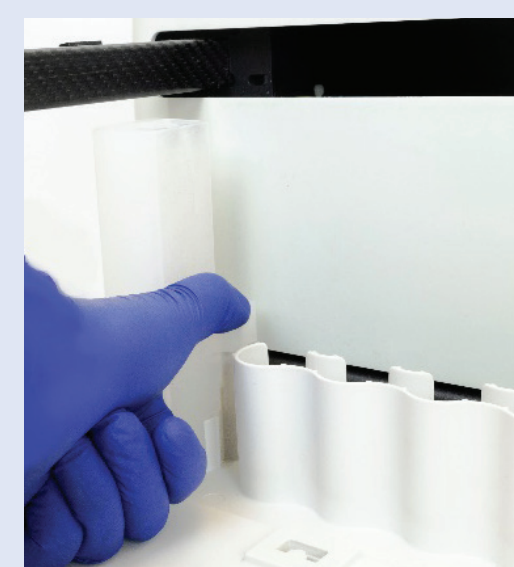


Installation Overview for Cytiva ÄKTA™ Systems



1



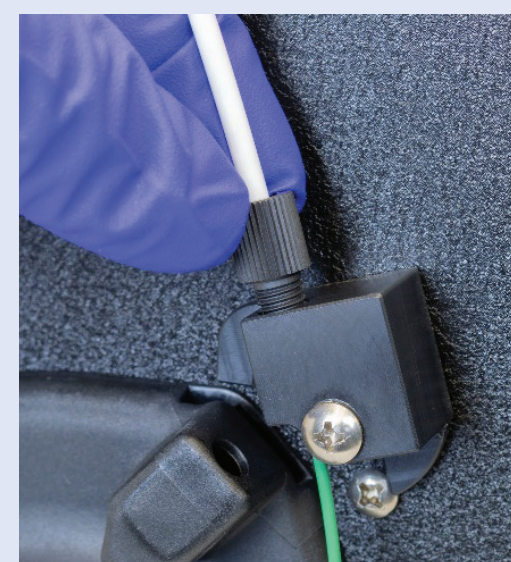
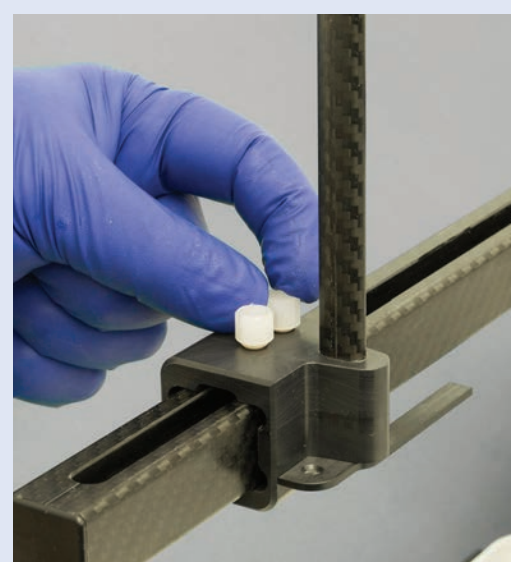
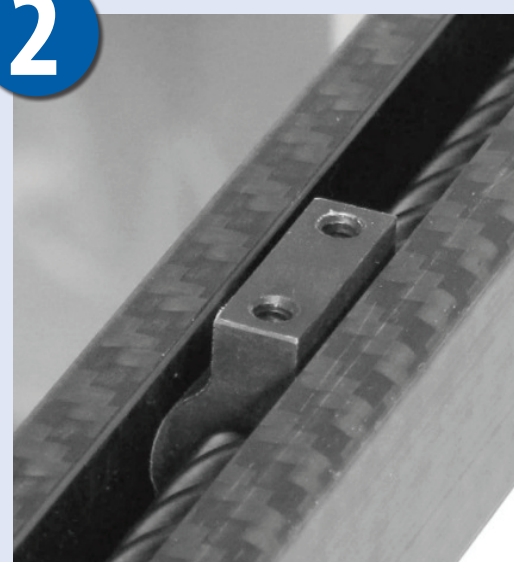
Choosing a Location and Unpacking the Autosampler

Place the autosampler where space, liquid waste, and power requirements can be met. Place the tray on the autosampler base. Mount the rinse station.



NOTICE: Do not lift the autosampler by its arm.

2



Mount the Z-Drive

Slide the Z-drive onto the arm until the two holes align with the matching holes in the Y axis carriage. Secure the Z-drive to the carriage using the two thumbscrews.

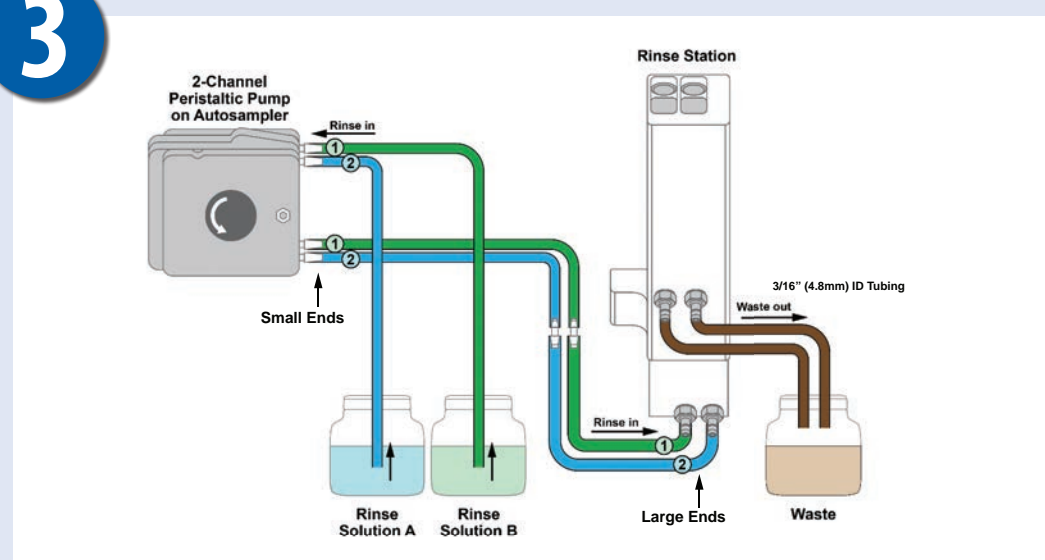
Routing the Cable

Feed the cable through the rear guide block and around the rotor, then tighten the nut to secure the cable sleeve to the guide block. Turn the rotor clockwise. Finish sliding the cable around the rotor on the back of the autosampler. Loosen the thumbscrew on the rotor. Position the cable with your fingertip while you rotate the rotor counterclockwise until about 2 mm of cable extends past the clamp.

Secure Cable to Rotor

Secure the cable by tightening thumbscrew on the rotor.

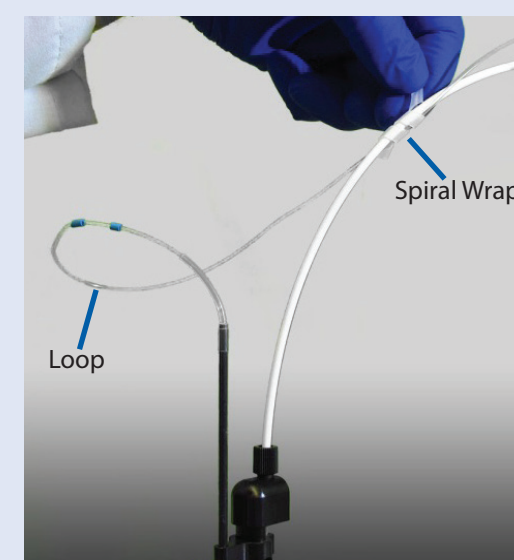
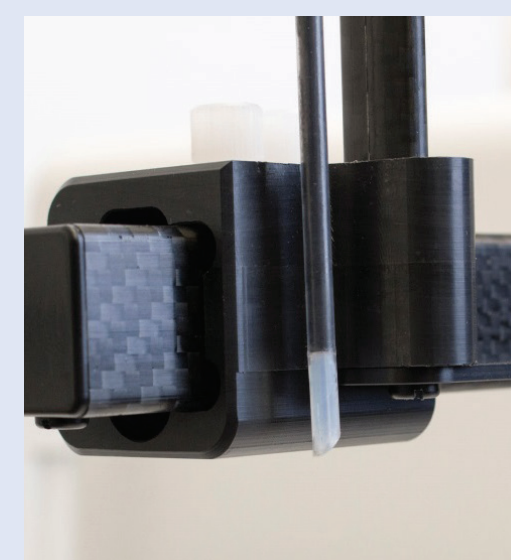
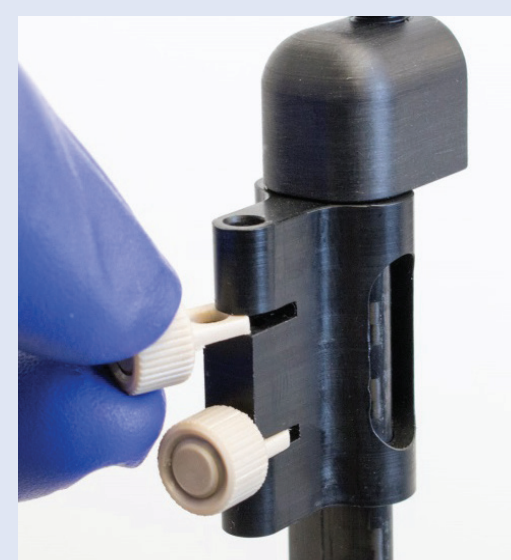
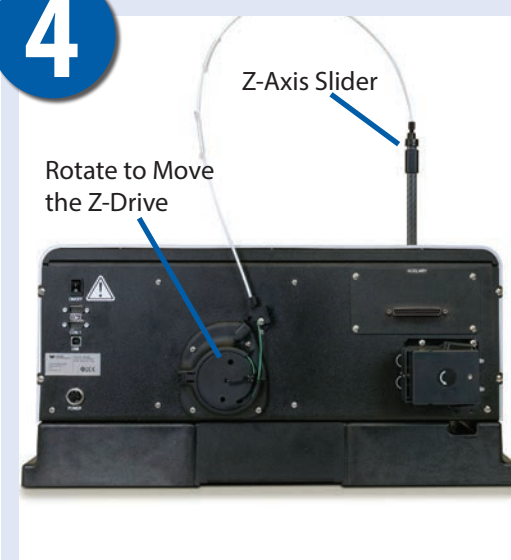
3



Connect the Rinse Station

Attach the rinse and drain tubing as shown. Make sure the end of the waste tubing stays above the liquid surface in the waste container.

4



Install the Sample Probe

Rotate the rotor on the back of the autosampler to move the Z-axis slider to the top of the Z-drive.

Loosen the nuts of the two probe clamps. Insert the clamps onto the Z-axis slider.

Guide the probe straight down until the tip of the probe is level with the bottom of the Z-Drive. Tighten the probe clamps.

Use the spiral wraps to secure the sample tube to the Z-drive cable. There should be just a little curve to the free sample tube when the probe is lowered, and an untangled loop when the probe is raised.

Connect the Sample Tubing to the Analytical Instrument

5



Connect the Power Supply

Connect the Host Computer

Use either a serial cable or a USB cable (not both).

USB Connection - Connect the USB or serial cable between the host computer and the autosampler.



6



Connect ASX 560 I/O Board to ÄKTA I/O Box

Connect cable between the ASX-560 and the Digital In/Out port on the AKTA I/O box.



7



Install the AScript Software

Install the Dashboard and AScript software from the USB drive. See the Installation Guide for detailed installation steps. See the Operators Manual on the USB flash drive for safety information and maintenance instructions.