

# QuickTrace<sup>®</sup> M-7600

CVAA Mercury Analyzer



The QuickTrace® M-7600 Cold Vapor Atomic Absorption (CVAA) mercury analyzer combines the proven technologies from its predecessors along with TCP/IP communication. TCP/IP technology guarantees that data collection performance will be a stable format for years to come.

The QuickTrace® M-7600 is used to analyze samples that include water and waste-water, soil and sediment, and biological tissues and fluids. The QuickTrace® M-7600 is ideal for ultra-trace to sub-mg/L mercury quantitation. The QuickTrace® M-7600 is designed for routine and research use in a variety of settings, including environmental laboratories, industry, and research institutes, for virtually any aqueous acidified sample.



# Key Features of the QuickTrace® M-7600

- Non-foaming Gas Liquid Separator (GLS) with overflow prevention system
- TCP/IP communications per laboratories preferences
- Advanced contamination control, over range and smart rinse features
- Superior baseline stability with double beam optics
- Ozone free low vapor pressure mercury excitation lamp
- Analyze samples with or without an autosampler
- Unlimited QC sample positions
- Automatic end of run and inactivity standby routines
- 12-roller 4-channel peristaltic pump
- Sample volume 0.5 mL to > 20 mL
- High capacity mode of < 60 seconds per sample
- Intuitive QuickTrace® software





## Performance

The QuickTrace® M-7600 mercury analyzer easily achieves the ultra-trace mercury detection limit of < 0.5 ng/L. It is also versatile enough to analyze samples > 500 µg/L without dilution. The QuickTrace® M-7600 is capable of switching between low mg/L and ng/L analysis without hardware or tubing configuration changes. Using the proven and reliable CVAA technique combined with multi-tasking Windows-based software package, the QuickTrace® M-7600 is the most stable and sensitive mercury absorbance analyzer available today. For ultra-trace analysis we recommend our autosampler enclosure to protect the samples from determinate errors such as dust particles. The autosampler enclosure will also protect your investment from the harsh acid gases normally present in and around digested samples.

- Ultra-trace detection limits (< 0.5 ng/L IDL)
- Linearity greater than 4 orders of magnitude
- Dynamic range < 0.5 ng/L to > 500 µg/L
- Without employing our smart rinse technology the system is ready to accurately measure a sample within four minutes following the ingestion of a 1 mg/L sample
- Short term precision (%RSD @ 95% Confidence) < 6.0% @ 5 ng/L, n=5
- Short term precision (%RSD @ 95% Confidence) < 1.2% @ 20 ng/L, n=5

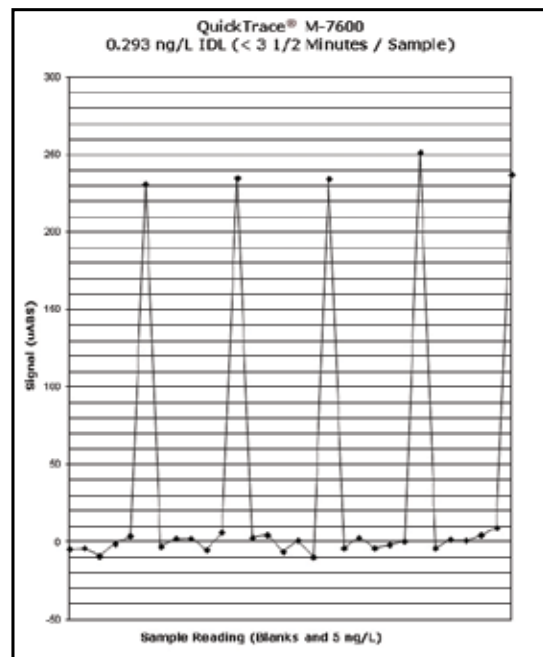
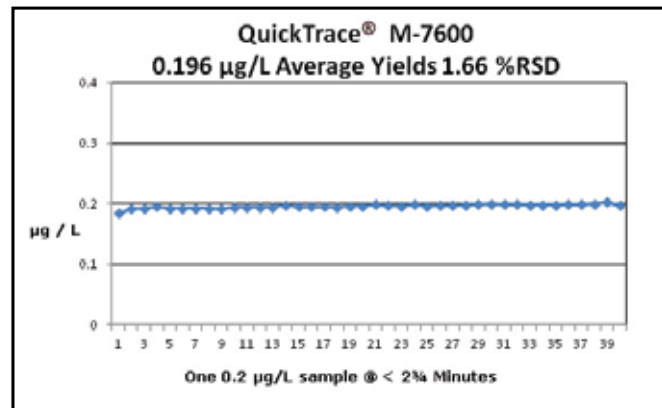
## Applications\*

EPA Method 245.1, 245.5, SW 846-7470 and SW 846-7471

ASTM Method; D3223 and D6414

EU Methods; Din ISO 16772, EN-13806 and ISO 12846

\*For a full list of applicable methods contact your sales specialist.



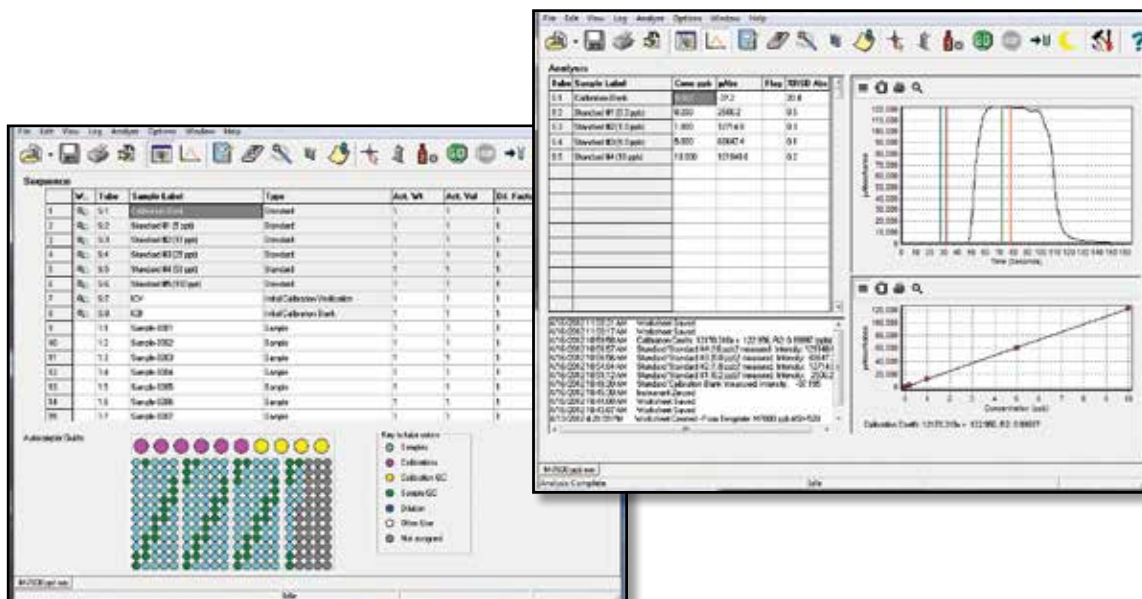


## QuickTrace®

Teledyne Leeman Labs has designed the multi-tasking QuickTrace® software package to be easy to learn, yet provide valuable features and flexibility while continuously adding customer requested features, truly making the software designed by the customer for the customer.

### Features of the QuickTrace® Software platform:

- Microsoft® Windows® 10
- User defined method threshold for over range response values and smart rinse technology
- User defined smart rack technology within a given method. This technology allows the autosampler the use of racks varying in size from 90, 60, 40, 24 or 21 tube position racks for samples, standards or quality control
- True Multi-tasking
- Simultaneously run analyses, develop methods, and print reports
- EPA 245.7 and 1631 quality control compliant
- User defined blank acceptance criteria for EPA 245.7 and 1631
- Customizable quality control features
- User defined one or two point baseline offset correction
- Integrate via peak height or peak area
- Scheduled consumable maintenance tracking
- Data files are efficiently exported to a network via the Ethernet port for convenient linking to a laboratory information management system (LIMS)
- Data files can be emailed to, and opened by, a Teledyne Leeman Labs representative on a PC
- Online help for immediate software support
- Automatic detection limit calculation - determine EPA defined IDL/MDL
- Real time exportable data-tracking log
- Individualized reports - customize printouts by selecting from several parameters
- Master worksheets - ready-to-run worksheets allow quick operation for new users





## Freedom of Choice

Teledyne Leeman Labs provides customers the freedom to choose an autosampler for their mercury analyzer that will meet their laboratories sample load requirements. The ASX-280 and ASX-560 autosamplers are available for any QuickTrace® Mercury Analyzers. Manual sampling is also available with the option to add autosamplers as sample demand increases.

ASX Standard Autosampler Specifications		
	ASX-280	ASX-560
Tray	10 Standards, 2 Sample Racks	10 Standards, 4 Sample Racks
Capacity	180 samples	360 samples
Dimensions (H x W x D)	62 cm x 35.5 cm x 55 cm (24.4" x 14" x 21.6")	62 cm x 58 cm x 55 cm (24.4" x 22.5" x 21.6")
Weight	8.1 kg (17.8 lbs)	11.7 kg (26 lbs)
Computer Interfaces	USB and/or RS-232	USB and/or RS-232
Power Requirements	100-240 VAC, 47-63 Hz, 1.9A	100-240 VAC, 47-63 Hz, 1.9A

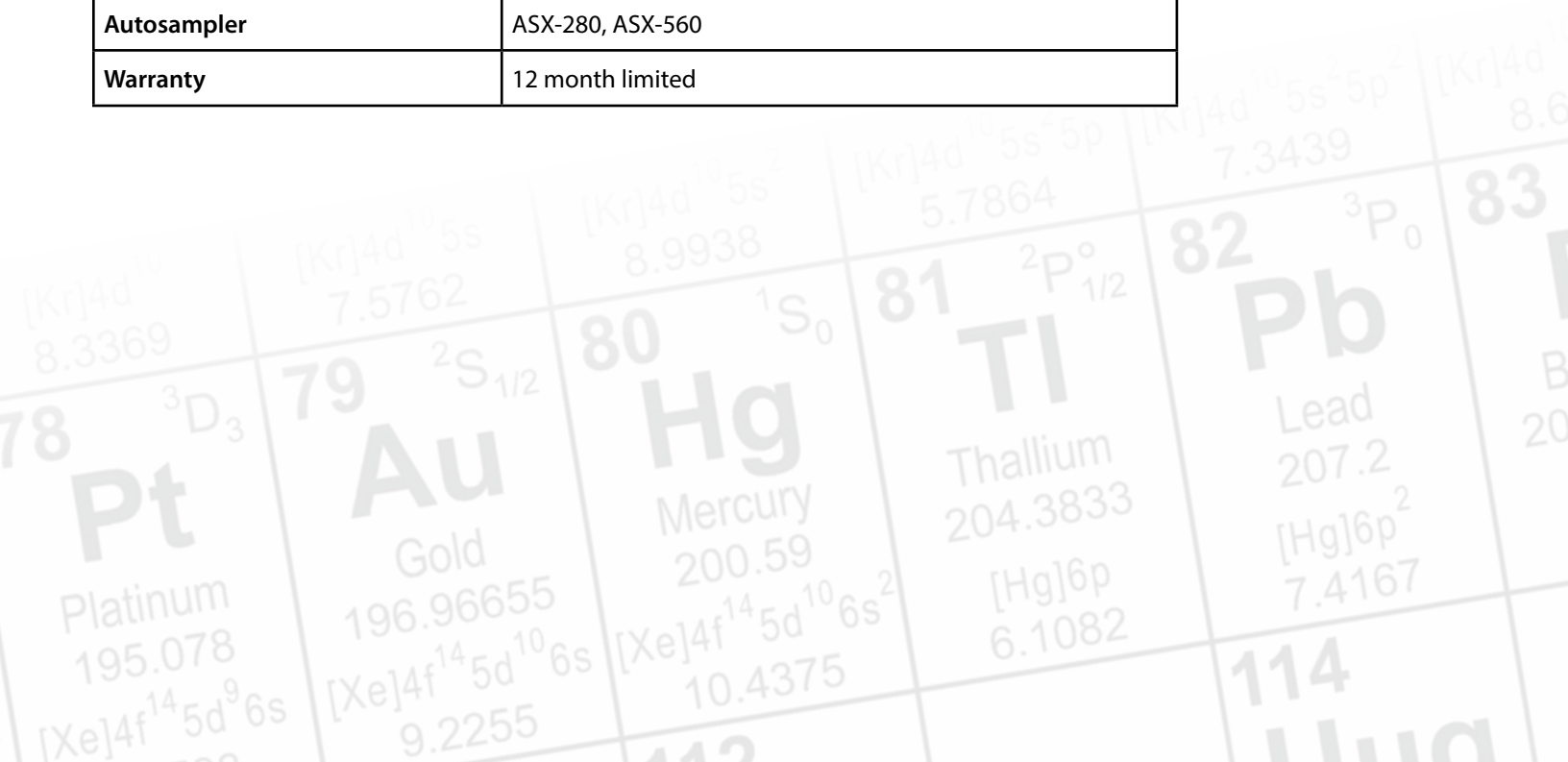




## Technical Specifications

Minimum Computer Requirements	
Microsoft® Windows® 10	
2 GB RAM for Microsoft® Windows® 10	
Video running 1024 x 768 with 24-bit color	
Pentium Dual Core 2.3 GHz	
One available USB port	
One standard factory installed Ethernet connection, if a network connection is desired. One available slot for the supplied Network Interface Card (NIC) for the analyzer connection.	
Internet Explorer 4 or higher must be installed for the online Help to function	

Technical Specifications	
Carrier Gas (N <sub>2</sub> or Ar)	Supplied at 120 psi
Power Requirements	100-240 VAC ±10%, 50/60 Hz
Height	46 cm
Width	20 cm
Depth	56 cm
Weight	35 lbs (16 Kg)
Computer Interfaces	Ethernet
Autosampler	ASX-280, ASX-560
Warranty	12 month limited



Teledyne LABS enhances the visibility for our brands, products, and services, aiding customers in finding solutions that meet their current and future needs. The existing Teledyne brands will remain, providing ongoing value to customers.

