

# CombiFlash<sup>®</sup> NextGen 100

## Flash Chromatography System

The CombiFlash NextGen flash chromatography system offers the most options in system configurations. Now there are three different models to choose from, based on your budgetary and application needs.

### *Setting the bar in flash chromatography performance*

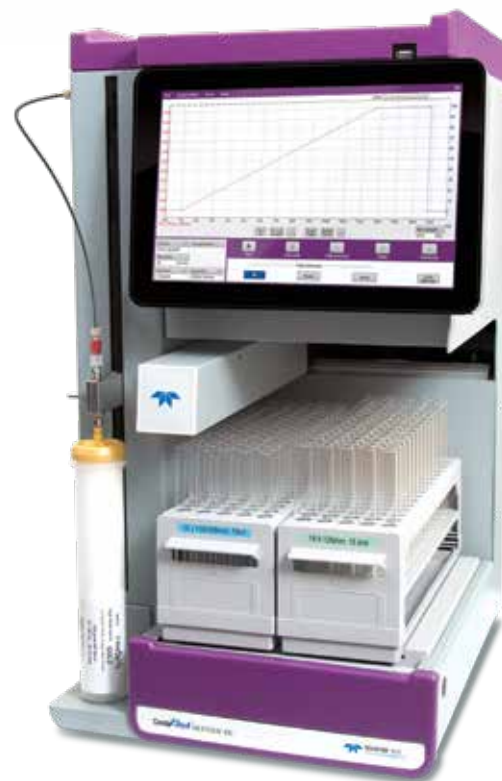
The CombiFlash NextGen 100 offers flow rates up to 100 mL/min and operating pressures up to 150 psi (10 bar). This economical, basic system performs both normal and reverse phase purifications. It accepts a variety of collection rack sizes so that purified compounds can be collected in volumes appropriate for the column size being used.

#### **Save time and solvent while increasing column loading.**

The Focus Gradient Generator for flash delivers optimized, predictive preparative method development using the results of a scouting run more quickly and efficiently than TLC. The Focus Gradient Generator in the CombiFlash NextGen system makes doing calculations quick and easy, eliminating the need to run multiple TLCs with different mobile phase concentrations. When combined with a Purlon™ mass spectrometer, you actually know which peak represents your compound of interest to optimize the method around—no guessing which spot is the target material.

*Can be fitted with an ELSD at the time of system purchase.*

*NextGen is compatible with Purlon Mass Spectrometer or ELS Detection.*



## CombiFlash<sup>®</sup> NEXTGEN 100

- **Straightforward**  
Complete control on one screen
- **Compact**  
Designed to take up minimal lab space
- **Flexible**  
Configure to meet your specific needs
- **Faster**  
New default methods with higher flows and steeper gradients speed up the purification without sacrificing performance
- **Greener**  
Conserve solvent with optimized gradients

#### **Standard System Features**

- **Flow rates** from 1 to 100 mL/min
- **Operating pressure** up to 150 psi (10 bar)
- **Choice of UV, UV-Vis ELSD or MS options**

## CombiFlash NextGen 100

Flow Rate Range:	1–100 mL/min
Sample Loading Technique:	Liquid, and manual Solid Sample loading
Column Size Compatibility:	4 g to 330 g
Maximum Pressure:	-Up to 150 psi (10 bar) -Lower pressure limits user defined
UV and UV-Vis Detection:	Variable UV 200–400 nm or Variable UV-Vis 200–800 nm (PDA Technology)
Real Time UV Spectral Display:	Standard
ELSD Detection:	Integrated option that can be combined with either UV or UV-Vis
Pump Type:	Dual Syringe
Number of Solvents:	Binary gradient, 2 solvents
Gradient Accuracy:	2% typical
Gradient Formation:	Low pressure

Programmable Gradients:	Linear, step, isocratic
Touchscreen:	12" capacitive touchscreen
User Interface:	PeakTrak Software
Software Upgrades:	Free
Real Time Method Editing:	Standard
Internal Vapor Sensor:	Standard
Fraction Collector:	Two Internal Rack Positions
Vapor Enclosure for Collection Racks:	Optional
Certification:	TCE, TUV, ROHS
Dimensions (H x W x D):	26 x 14.1 x 17 in (66 x 36 x 43 cm)
Weight with ELSD:	74 lb (33.6 kg)
Weight without ELSD:	61 lb (27.7 kg)

## CombiFlash NextGen 100 Order Numbers

68-5250-010	CombiFlash NextGen System with 200–400 nm UV variable wavelength detector.
68-5250-011	CombiFlash NextGen System with 200–800 nm UV-Vis variable wavelength detector.

## CombiFlash NextGen 100 Factory Additional Detector Options

60-5257-002	Factory Installed ELSD for CombiFlash NextGen.
-------------	--

## CombiFlash NextGen 100 Field Options

60-5257-008	Sample rack vapor enclosure for operation outside the hood.
-------------	---

## CombiFlash Sample Injection Options

60-5237-047	Adjustable Solid Load Cartridge Cap (SLCC), fits 2.5 and 5 gram-size sample load cartridges.
60-5237-048	Adjustable Solid Load Cartridge Cap (SLCC), fits 12 and 25 gram-size sample load cartridges.
60-5237-044	Adjustable Solid Load Cartridge Cap (SLCC), fits 32 and 65 gram-size sample load cartridges.

## Rack Size

(Diameter (mm) x Height (mm))	13 x 100	16 x 100	16 x 125	16 x 150	18 x 150	18 x 180	25 x 150	480 mL French Square Bottles*
# of Tubes (per rack)	108	75	75	75	70	70	30	12
PN (set of 2):	60-5237-013	60-5237-061	60-5237-031	60-5237-032	60-5237-033	60-5237-034	60-5237-035	60-5237-040

\*1 Rack fits two positions on instrument (PN includes only one rack)



teledynelabs.com    

Teledyne LABS is continually improving its products and reserves the right to change product specifications, replacement parts, schematics, and instructions without notice.

L-5217 Rev10.0  
02/24